

ASL-I

- 1) SUPPLY CLEAN DRY AIR @ 80 PSI
- 2) SUPPLY POWER @ 220 OR 440 VAC
- 3) AMBIENT TEMP. 50°F - 112°F (10°C-45°C)
- 4) DRIVE MOTOR 2 HP
- 5) VACUUM MOTOR 2 HP

NOTE:
FOR RIGHT HAND FEED MACHINES
IN-PUT CONVEYOR FEEDS BOTTLES
FROM OPPOSITE DIRECTION

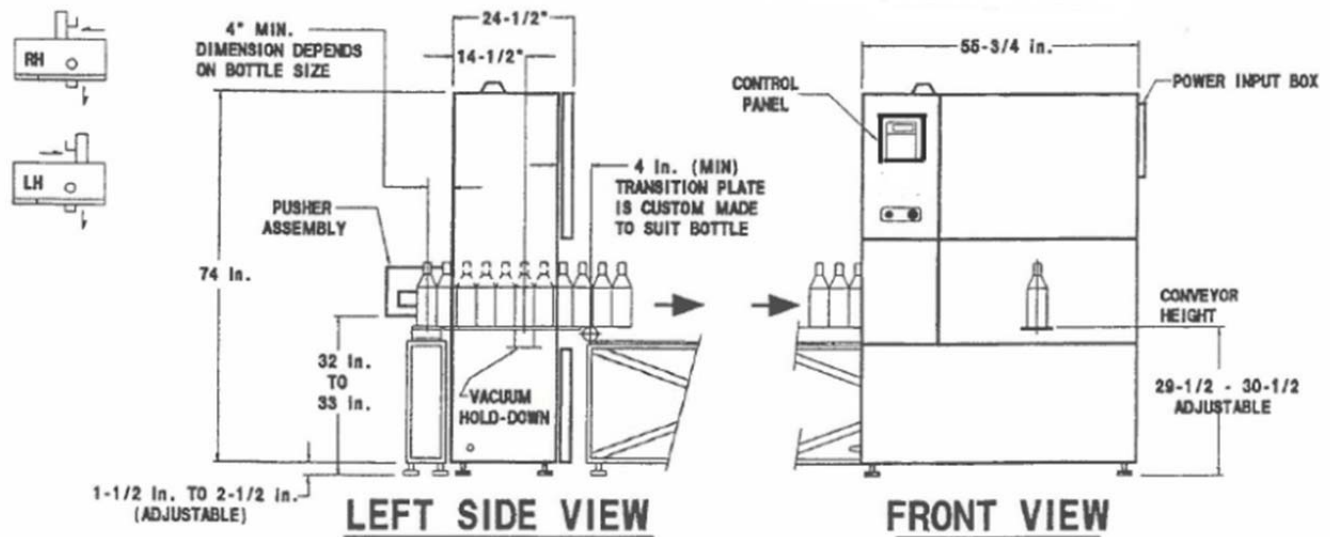
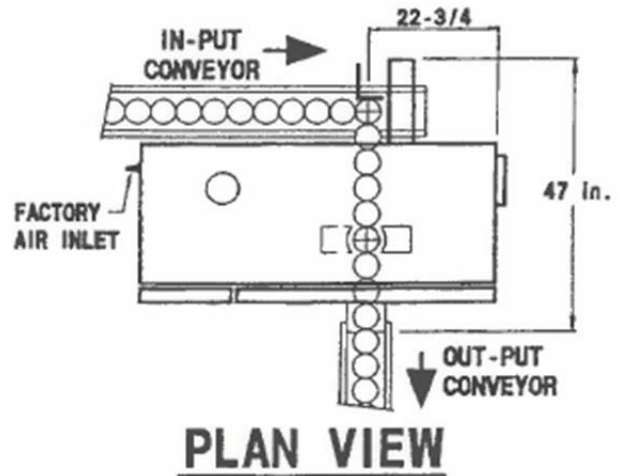


Fig. 1 - 1

CUSTOMERS ARE RESPONSIBLE FOR THE PROVISION OF IN-PUT AND OUT-PUT CONVEYORS AND FOR THE PROVISION OF ELECTRIC AND COMPRESSED AIR SUPPLIES. PLEASE ALLOW UP TO 40 INCHES AROUND THE MACHINE TO PROVIDE ACCESS TO SERVICE PANELS, GUARDING AND CHANGING OF LABEL REELS.